

# **Network Management Card**

**~Quick Installation Guide~**

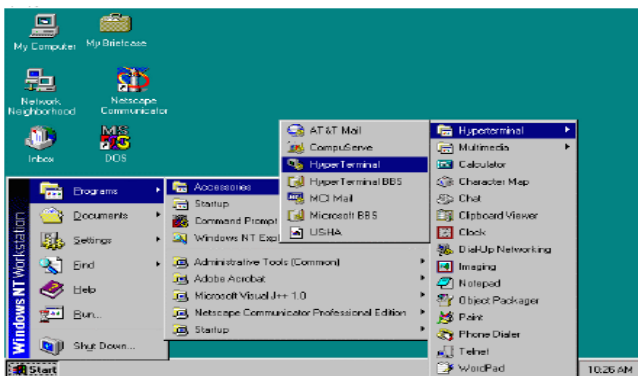
### ► Network Management Card Hardware Installation:

1. Insert Card into the slot provided by UPS, put the screws and tighten them.
2. Procure a Windows computer.
3. Use the RJ45 to DB9 female serial cable that provided from package connects between the NMC COM port and the COM port on the workstation.



### ► Configuring Network Management Card via Serial Port

1. In Microsoft Windows click Start -> Programs -> Accessories -> Hyper terminal.
2. Enter a name and click OK.



3. Select the correct COM port and click OK.
4. Configure the port setting as 9600 bps, 8 data bits, None (parity), 1 Stop bit and None Flow Control. Then click OK.



5. Enter the default password "password" and the Network Management Card Configuration

Menu will display on the screen.

NMC Version x.x.x.x

```
+-----+
|           Network Management Card Configure Menu           |
+-----+
```

Password:

6. Enter "1" to enter the Agent Configuration Menu.

```
+-----+
|           Network Management Card Configure Menu           |
+-----+
1. IP Configurations
2. Pass Through
3. Reset Configuration to default
4. Restart
5. Change Password
0. Exit
```

Please Enter Your Choice :

7. Assign an IP address and set the correct Subnet Mask; Gateway; DHCP.

Please Enter Your Choice : 1

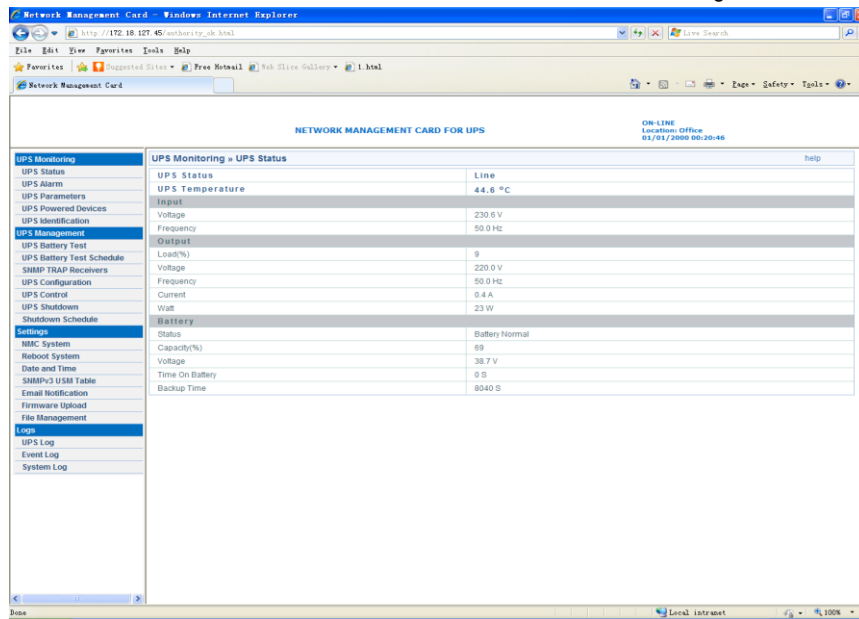
```
+-----+
|           IP Configure Menu                               |
+-----+
MAC Address : 00:20:85:F7:10:1F
1. DHCP      : Enable
   IP address : 172.18.127.45
   Subnet mask : 255.255.255.0
   Gateway    : 172.18.127.1
   Primary DNS address : 172.18.121.17
   Secondary DNS address : 151.110.232.21
7. IPv6 Configure
0. Return to previous menu
```

Please Enter Your Choice : \_

### ►Control the Network Management Card/UPS via Web Browser

Start your Web Browser; enter the Network Management Card IP address in the Address text box, the Network Management Card Web page will be shown on the Browser.

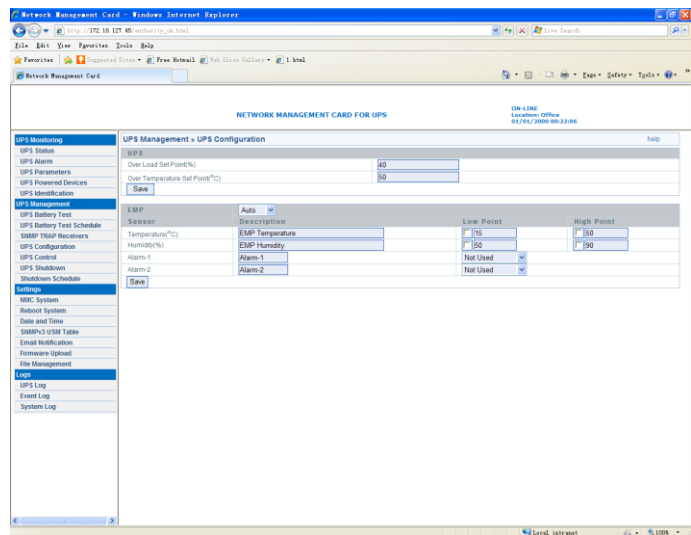
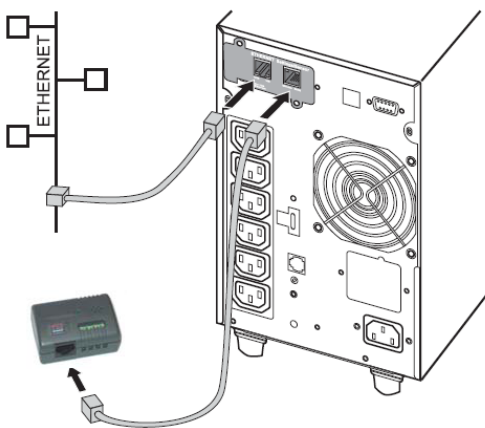
Some setting pages need to enter the user name and password to log in. The default user name is "root" and default password is "password".



► **EMP Connection(optional)**

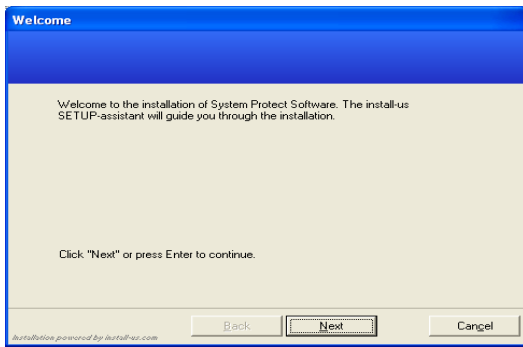
The Environment Monitor Probe is a NMC option. It monitors the temperature and humidity of the UPS environment, and check the states of two external contacts. It can also send alarms (email, trap) by pre-set thresholds.

Connection is made via the setting port on the NMC, the EMP is detected automatically. Configuration could be made via UPS configuration menu.

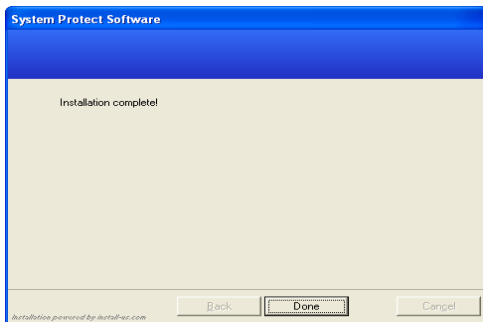


► **System Protect Software (Windows) Setting**

1. Double click the setup.exe
2. Display install software screen

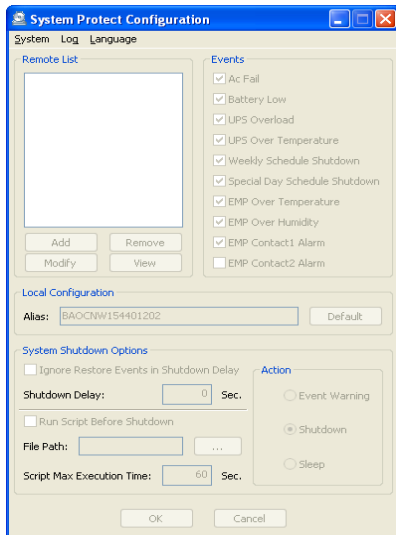


### 3. Install complete

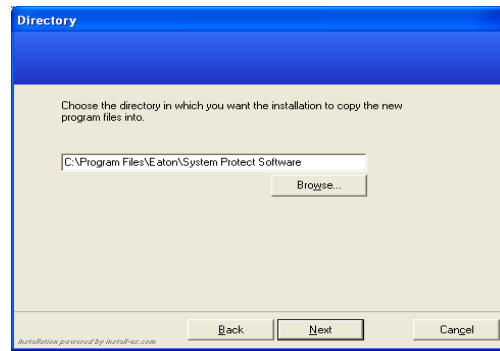


### 5. Setting the SPS.

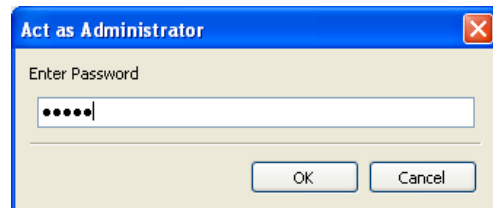
Right click the SPS icon shown in system tray and select the "Configuration"



System->act as administrator, and enter the default password "admin".

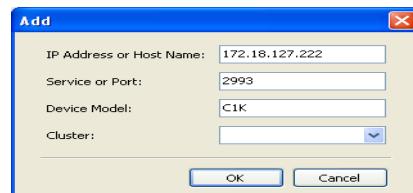


### 4. Start up from window (start->All Programs->System Protect Software->Start System Protect Service)



### 6. Add NMC

Click "Add" button, and then entering the popped window. Enter the NMC IP address and device model.



The connection between SPS and NMC has established.



Other settings:

