

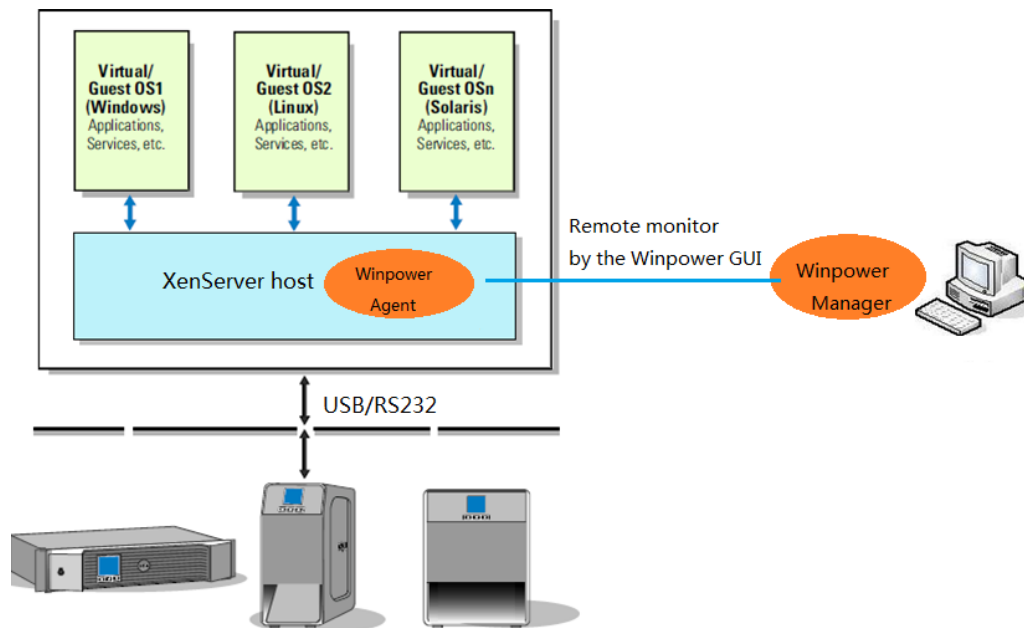
# Installation and configuration for Winpower in Citrix XenServer

Winpower Test version
XenServer 5.5
XenServer 6.2
XenServer 6.5

## 1. Over Viewer

Winpower is installed on the XenServer host. When the shutdown condition is met, the Winpower will notify the XenServer host to shutdown.

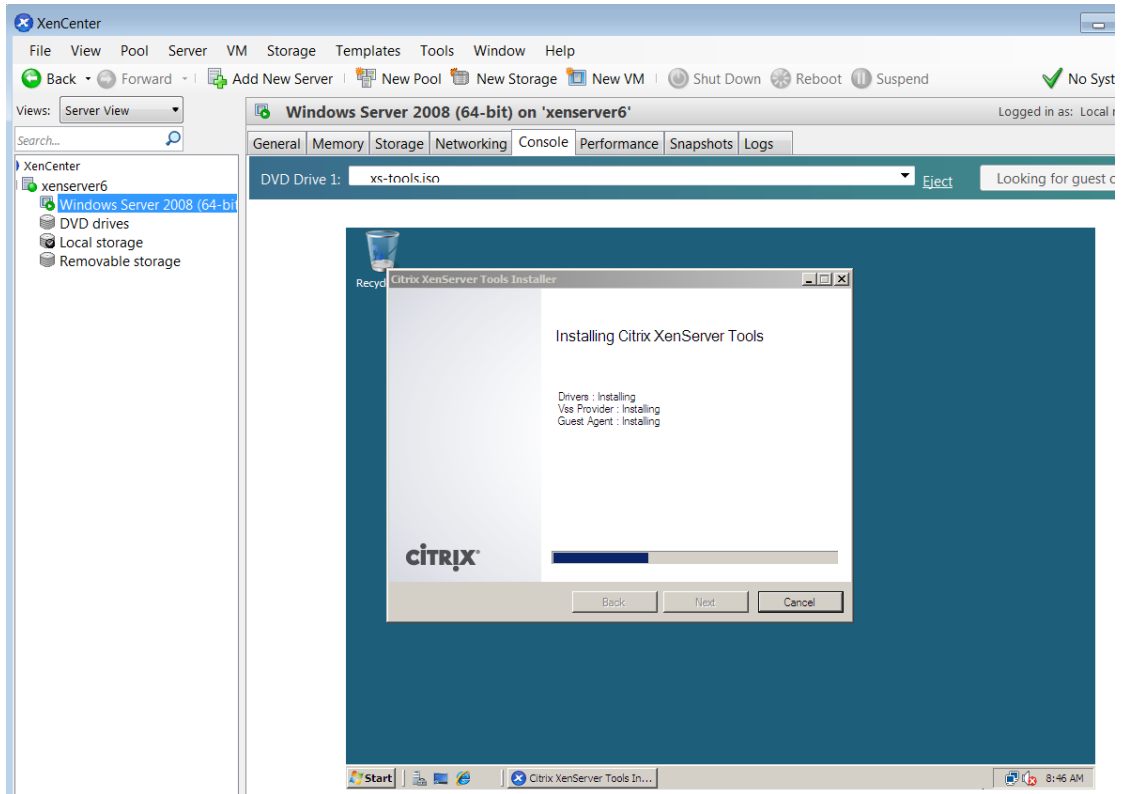
The VMs will be shut down automatically before the host shut down. ( This action takes effect as default by the XenServer )



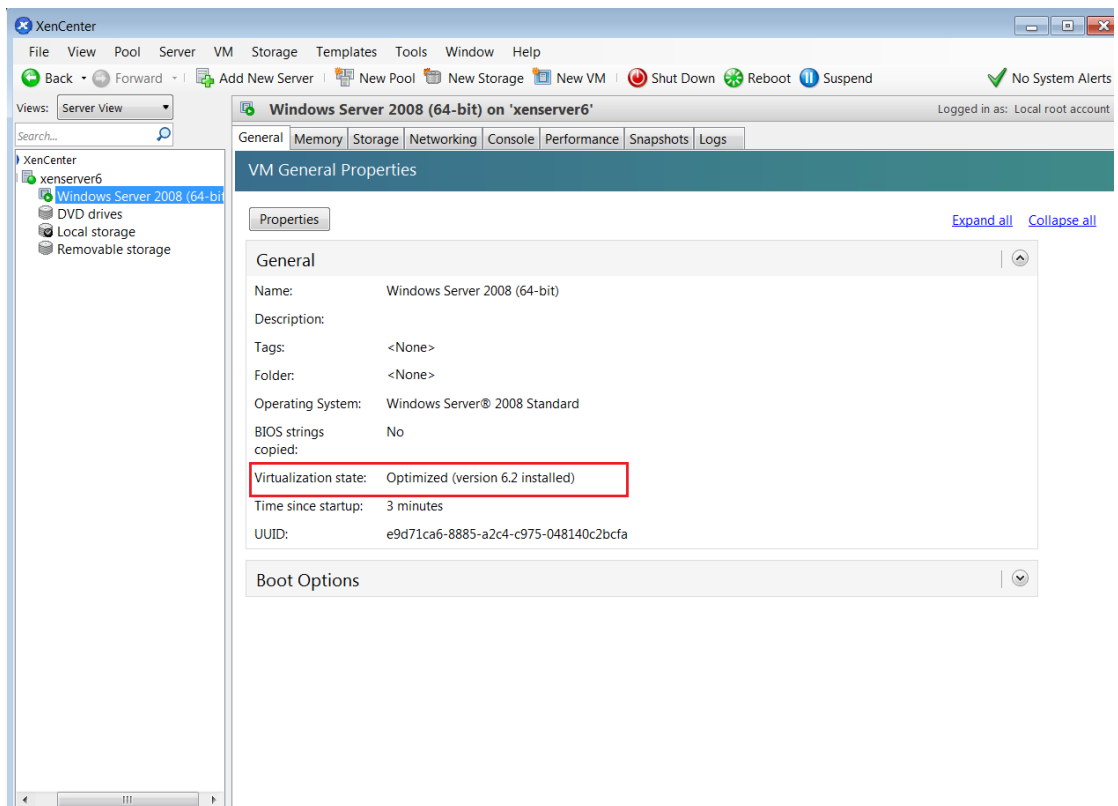
## 2 Citrix XenServer Configuration

### 2.1 Installing XenServer tools for each Virtual Machine

- Open the XenServer Client, Choose the VMs, Right click VMs, Click "Install XenServer Tools"



- The XenServer Tools is installed as below image:



## 2.2 Open XenServer host ports

- The Winpower use UDP 2198/2199/2200 as the communication port with remote Winpower agent
- Open the XenServer Client, click the host console, Open the UDP port by the following command:  
For example:  

```
iptables -I INPUT -p udp --dport 2199 -j ACCEPT  
iptables -I OUTPUT -p udp --dport 2199 -j ACCEPT  
/etc/rc.d/init.d/iptables save
```

## 3 Installing and Configuring for Winpower

### 3.1 Installing Winpower

- Upload the installation file "Winpower\_setup\_LinuxAMD64.tar.gz" to the XenServer host using WinSCP tools
- Unzip the installation file and install the Winpower by the command  

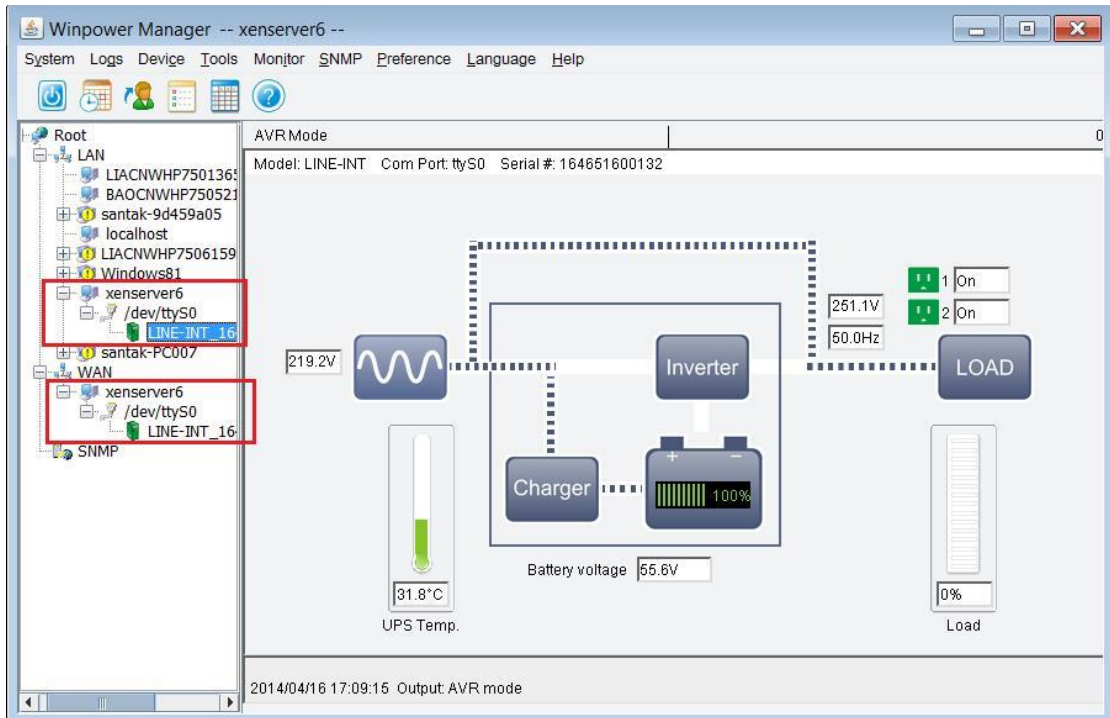
```
tar -zxvf Winpower_setup_LinuxAMD64.tar.gz
```
- Install the Winpower by the command":  

```
./setup_console.bin
```

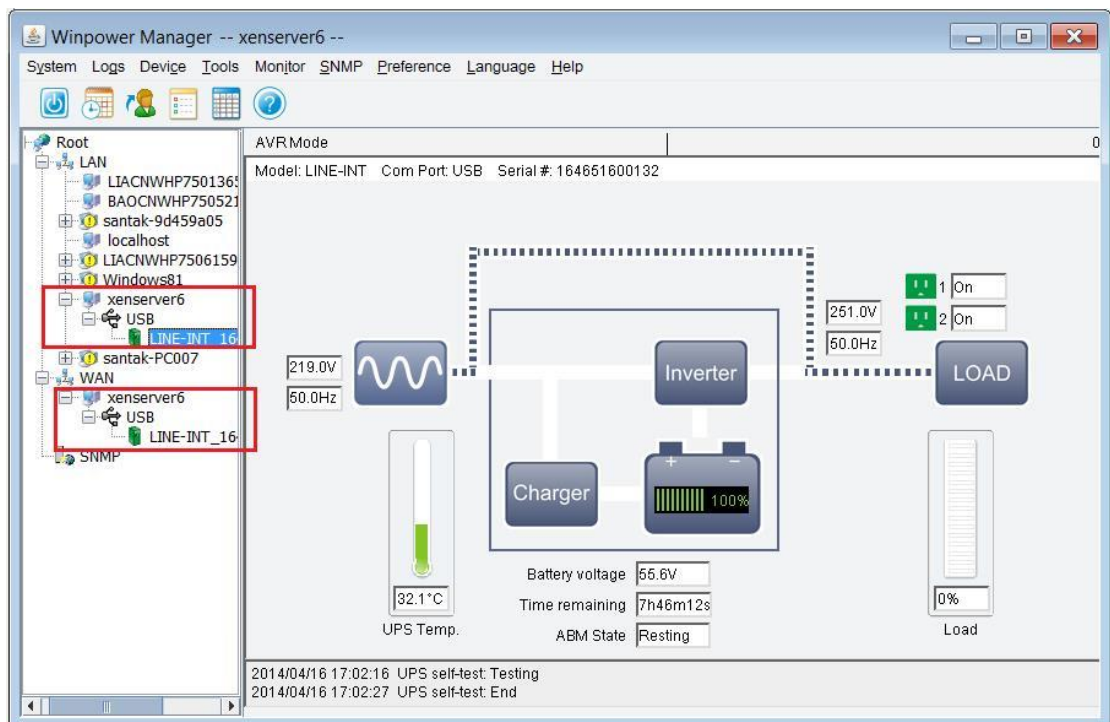
### 3.2 Configuring Winpower

- Connect the UPS with Server via USB/RS232, Enter the "/opt/MonitorSoftware" directory, start the Winpower agent by the command:  

```
cd /opt/MonitorSoftware  
./agent start
```
- For the Winpower agent of the XenServer is CUI mode, Please set the winpower agent by remote Winpower Manager (Winpower with GUI) on the windows  
The winpower will search for the UPS for the first start after installing,  
If the UPS is not detected, please search for the UPS manually as following:  
Choose the Winpower agent on the XenServer host, open the "System"->"Auto Search Device", the UPS can be added under the LAN or WAN ( **xenserver6** is the host name of the host)



(RS232 Communication)



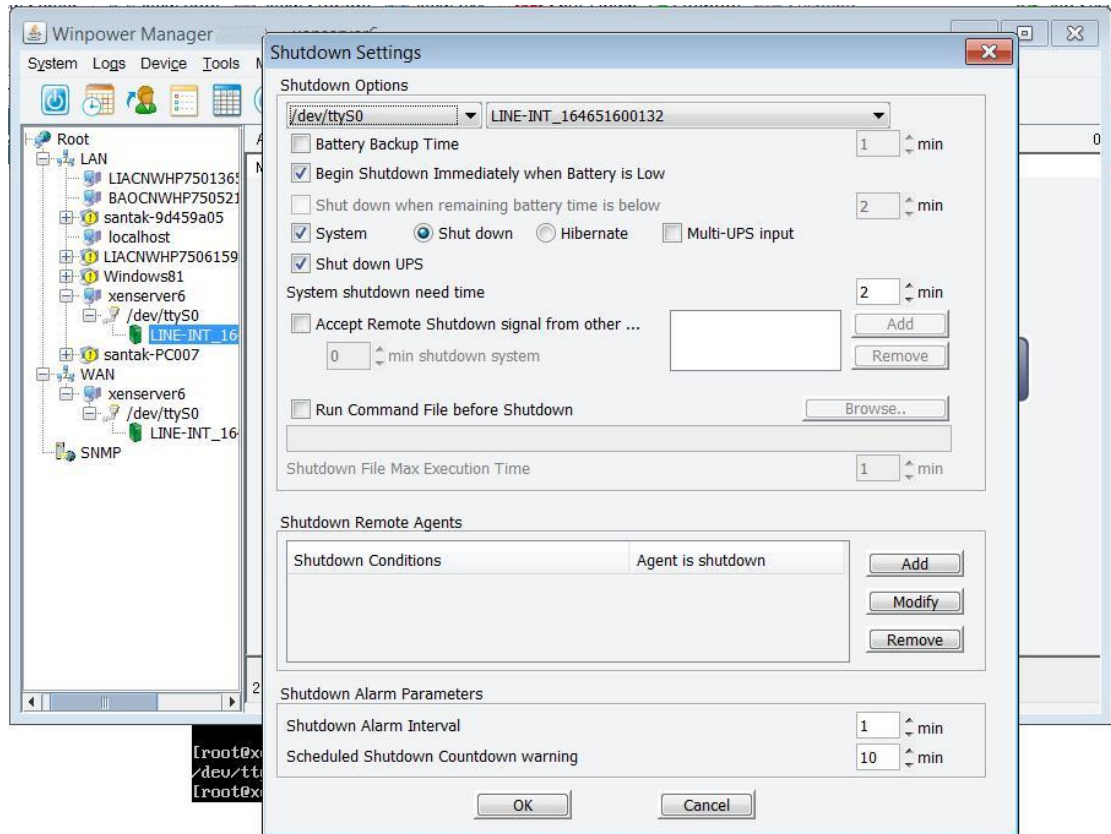
(USB Communication)

- The `/dev/ttyS0` (Serial Port 1) is captured by the system for the XenServer 5.5, not including XenServer 6.2, So the USB to RS232 can be used for the XenServer 5.5. Choose the Winpower agent on the XenServer host, open the **“System”->“Com Port Setting”**, add the serial port name. The serial port name is `/dev/ttyUSB0` as default. Auto search again manually after adding the port name.  
**Note:** Check the `/dev/ttyS0` is used or not by the command `“setserial /dev/ttyS0”`.

If the /dev/ttyS0 is available, the serial port parameters can be shown as below picture:

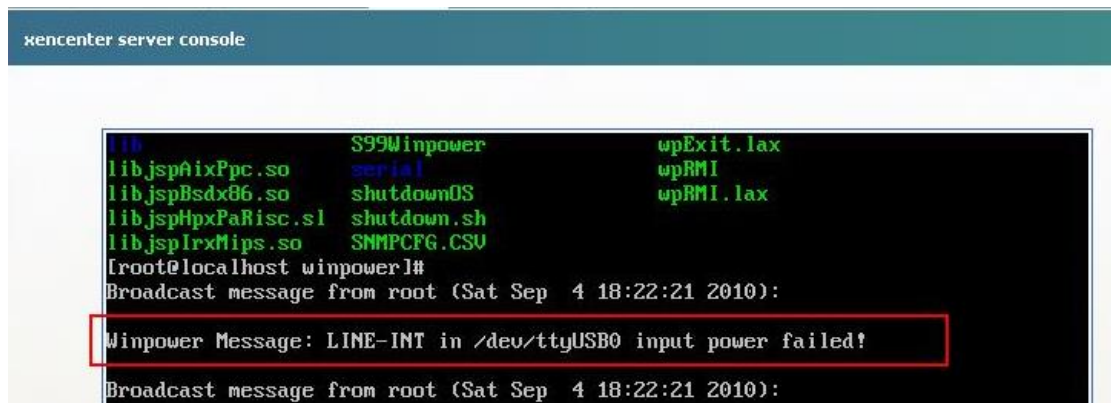
```
[root@xenserver6 MonitorSoftware]# setserial /dev/ttyS0
/dev/ttyS0, UART: 16550A, Port: 0x03f8, IRQ: 4
[root@xenserver6 MonitorSoftware]#
```

- Choose the Winpower agent on the XenServer host, Set the shutdown Parameter as your desire



### 3 Alarm pop up

- The alarms will pop up when the UPS power fail



```
.jspw.nlm          policy            Winpower_InstallLog.log
lax.jar           portConfig.rmi   wpExit
lib              S99Winpower      wpExit.lax
libjspaixPpc.so   serial           wpRMI
libjspbsd86.so    shutdownOS       wpRMI.lax
libjshpxPaRisc.sl shutdown.sh
libjspirxMips.so  SMMPCFG.CSV
[root@localhost winpower]#
Broadcast message from root (Sat Sep  4 18:14:31 2010):
Winpower Message: LINE-INT in USB input power failed!
```